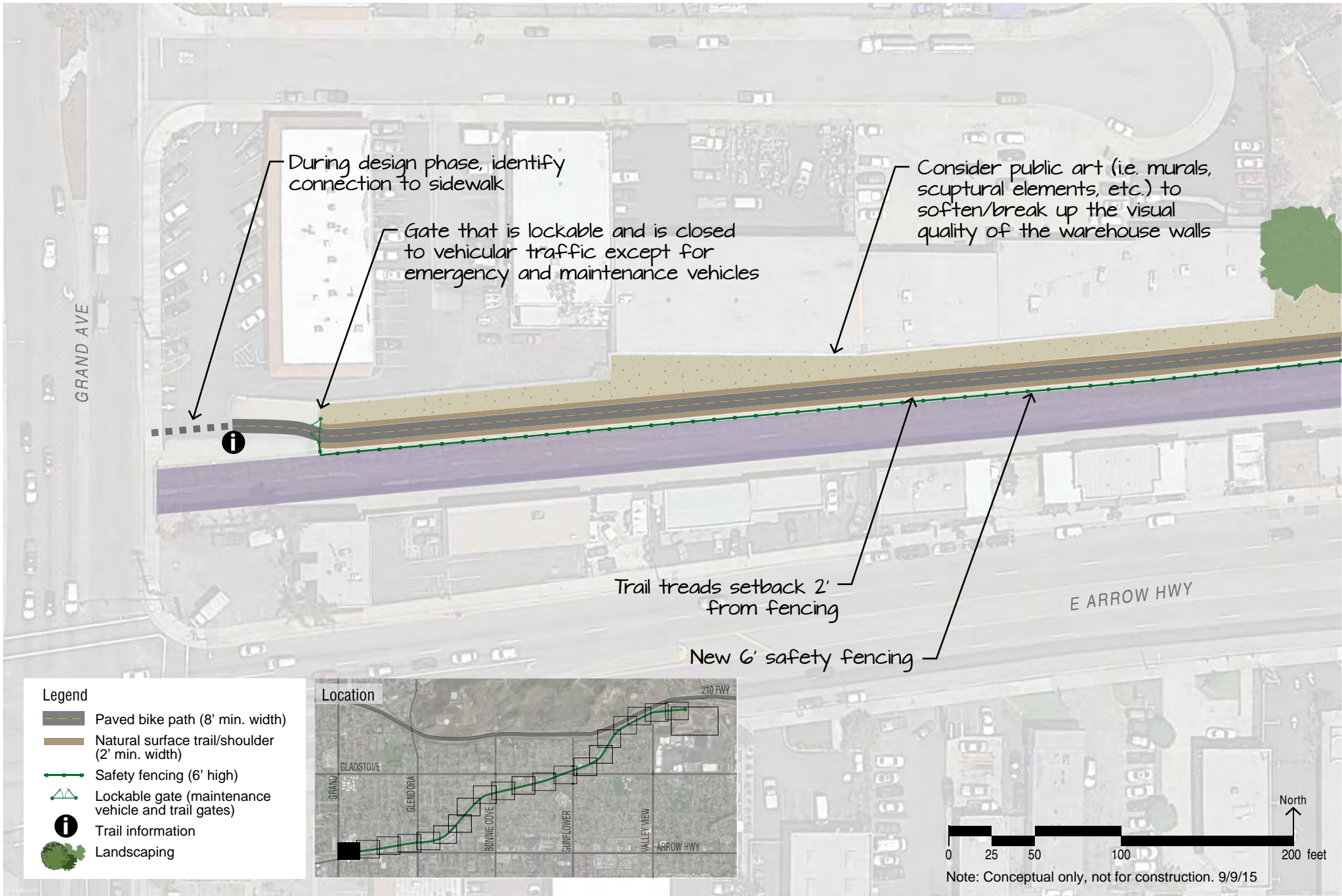
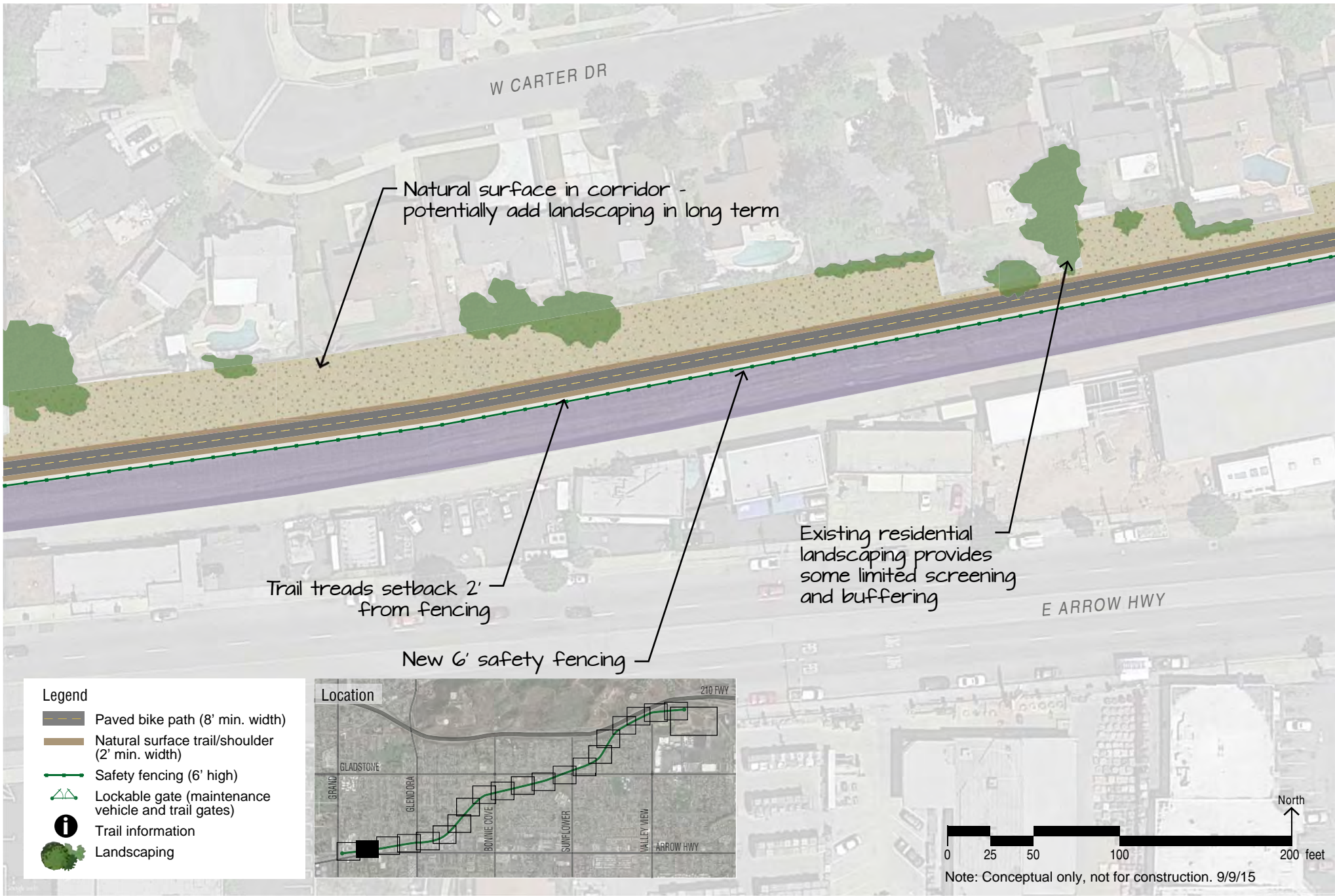
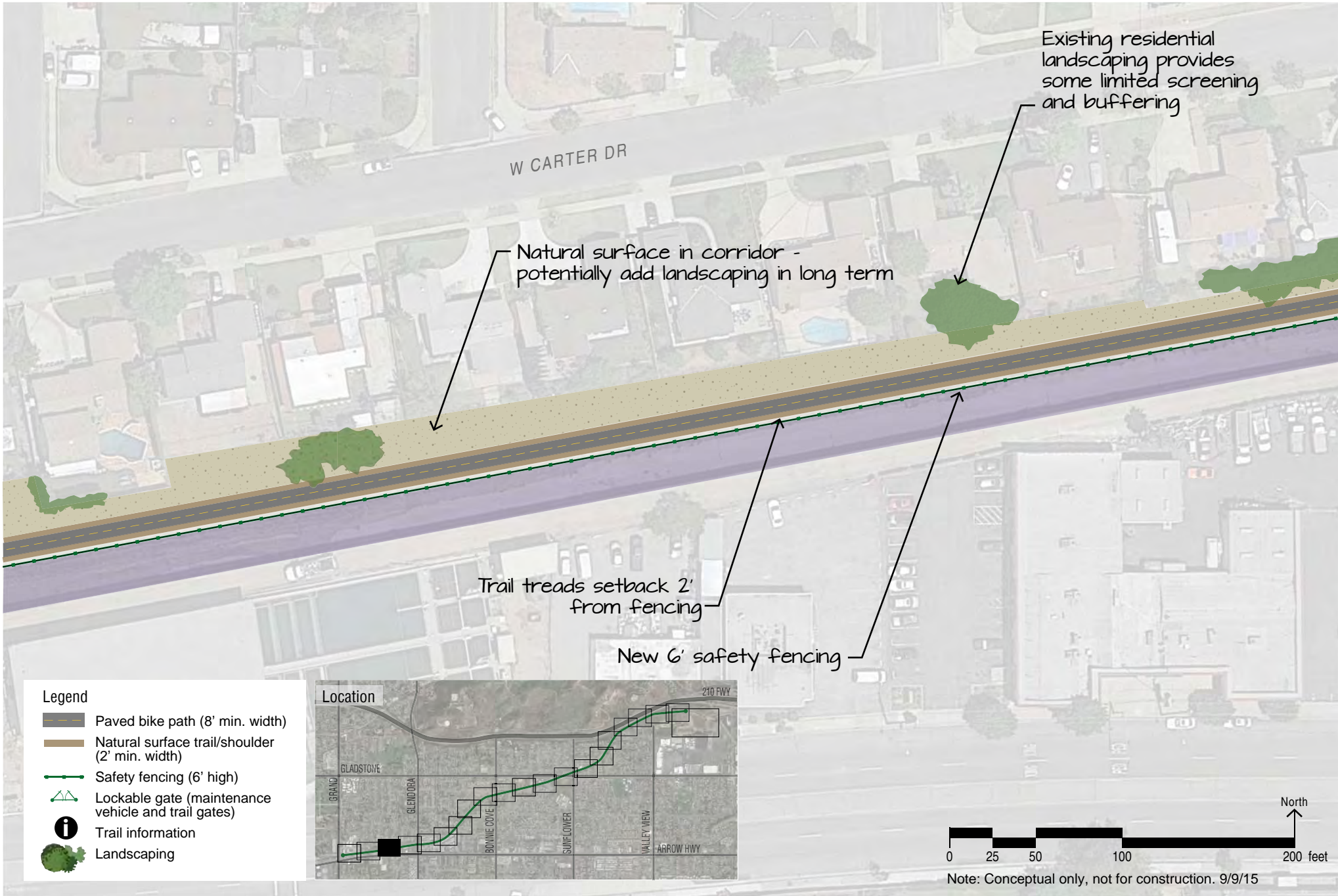


Typical Section - San Dimas Wash Trail

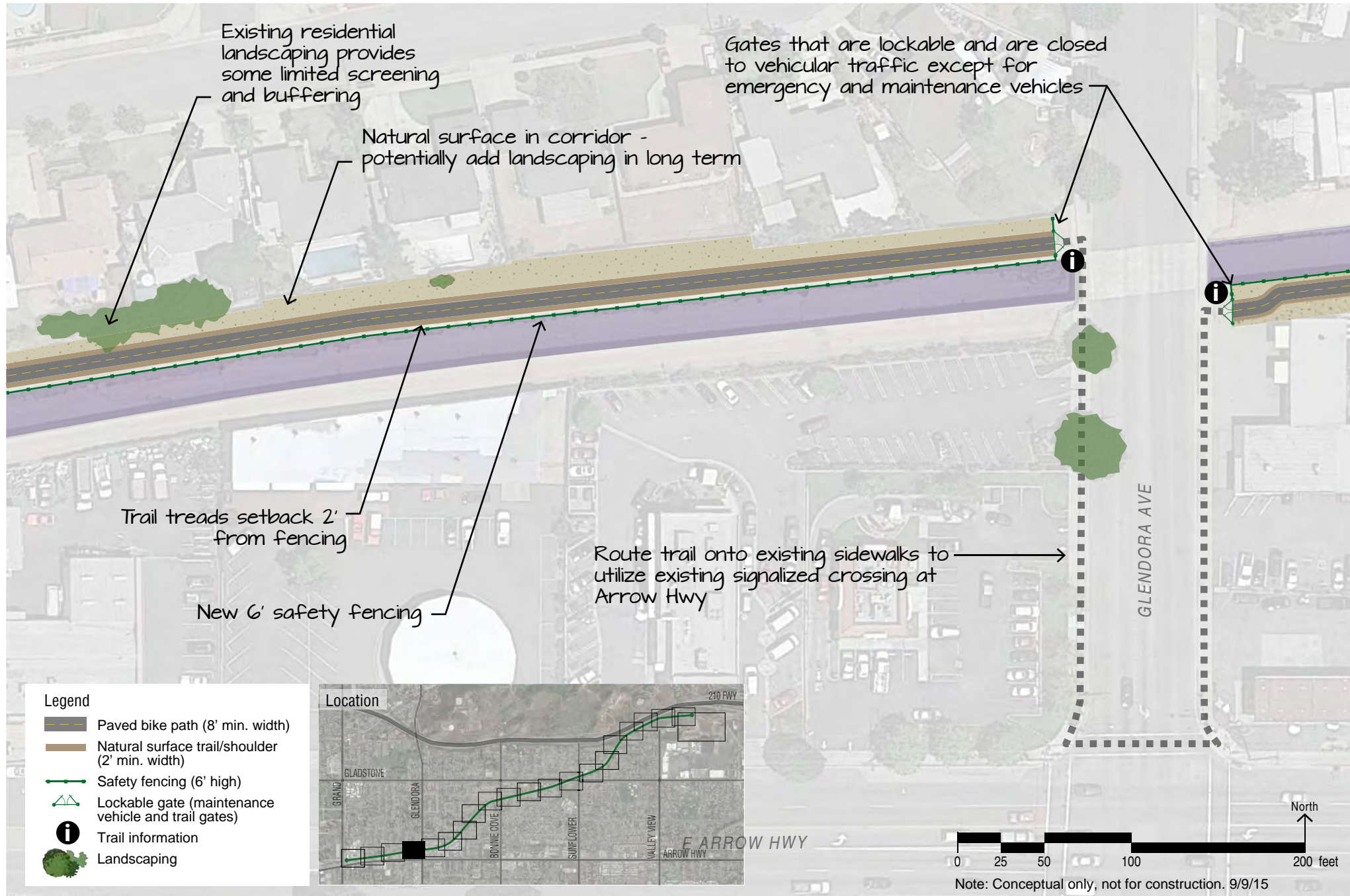


Grand Ave to Glendora Ave (1 of 4)









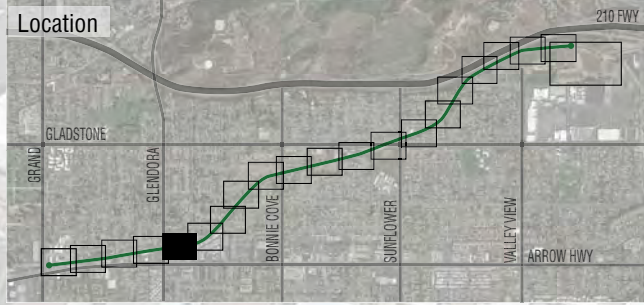


Grand Ave to Glendora Ave (3 of 4)



Legend

-  Paved bike path (8' min. width)
-  Natural surface trail/shoulder (2' min. width)
-  Safety fencing (6' high)
-  Lockable gate (maintenance vehicle and trail gates)
-  Trail information
-  Landscaping



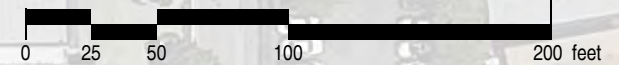
New 6' safety fencing

Trail treads setback 2' from fencing

Visual buffer (e.g. new solid fencing, vegetation, etc.) needed along this reach - currently chainlink fence with vehicle storage

Gate that is lockable and is closed to vehicular traffic except for emergency and maintenance vehicles







Route trail onto existing sidewalks to utilize existing signalized crossing at Arrow Hwy

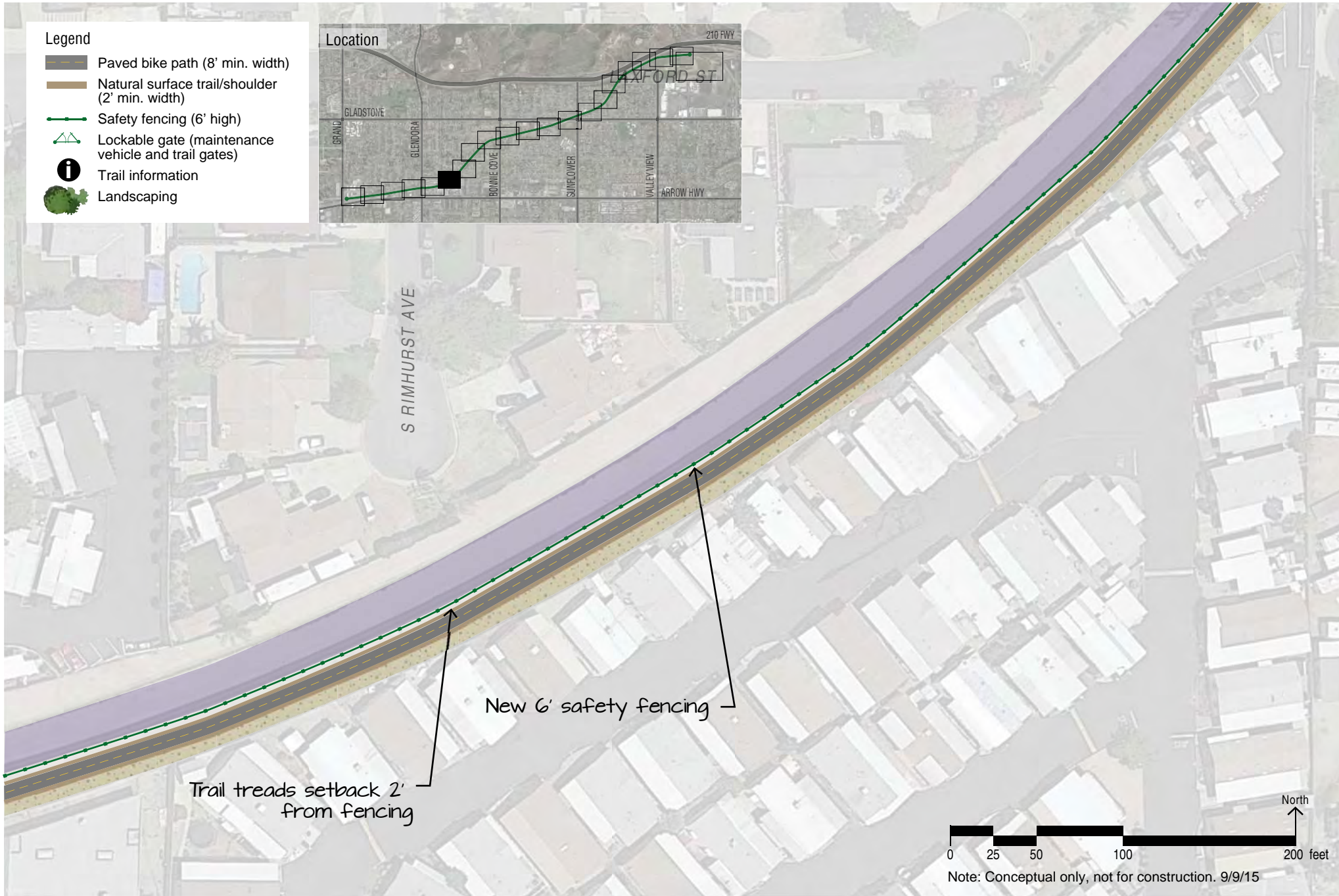
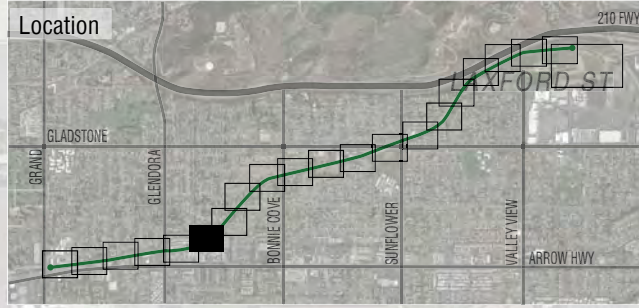


Note: Conceptual only, not for construction. 9/9/15







North

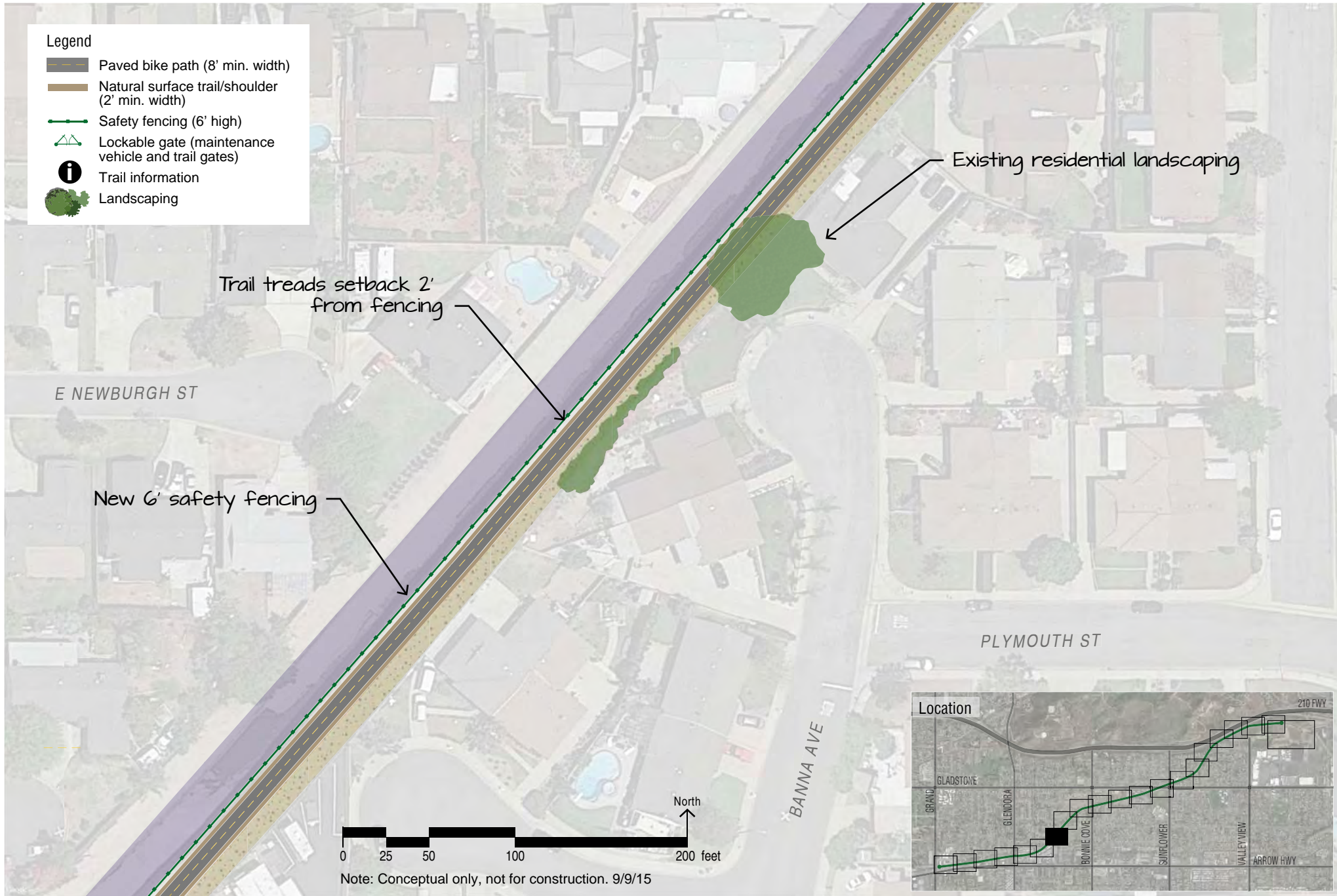
Legend

-  Paved bike path (8' min. width)
-  Natural surface trail/shoulder (2' min. width)
-  Safety fencing (6' high)
-  Lockable gate (maintenance vehicle and trail gates)
-  Trail information
-  Landscaping









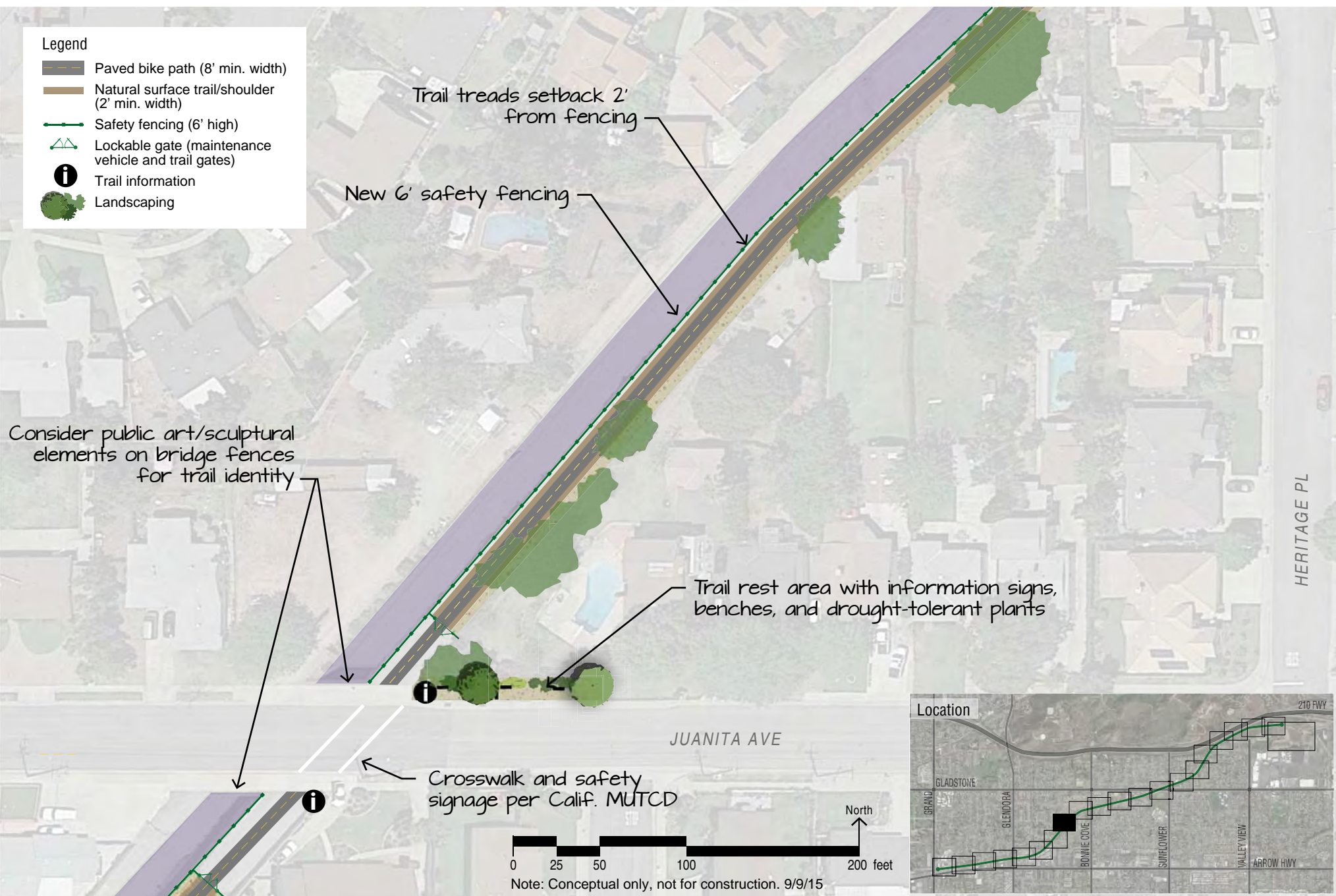
Legend

-  Paved bike path (8' min. width)
-  Natural surface trail/shoulder (2' min. width)
-  Safety fencing (6' high)
-  Lockable gate (maintenance vehicle and trail gates)
-  Trail information
-  Landscaping









Legend

-  Paved bike path (8' min. width)
-  Natural surface trail/shoulder (2' min. width)
-  Safety fencing (6' high)
-  Lockable gate (maintenance vehicle and trail gates)
-  Trail information
-  Landscaping



Juanita Ave to Bonnie Cove Ave (1 of 2)

Legend

-  Paved bike path (8' min. width)
-  Natural surface trail/shoulder (2' min. width)
-  Safety fencing (6' high)
-  Lockable gate (maintenance vehicle and trail gates)
-  Trail information
-  Landscaping

Consider public art/sculptural elements on bridge fences for trail identity

Gates that are lockable and closed to vehicular traffic except for emergency and maintenance vehicles

Trail treads setback 2' from fencing

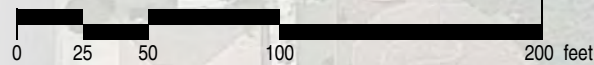
New 6' safety fencing

Crosswalk and safety signage per Calif. MUTCD

BONNIE COVE AVE

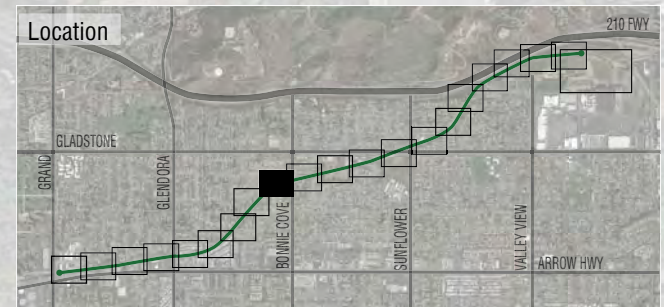
HERITAGE PL

E PAYSON ST









North

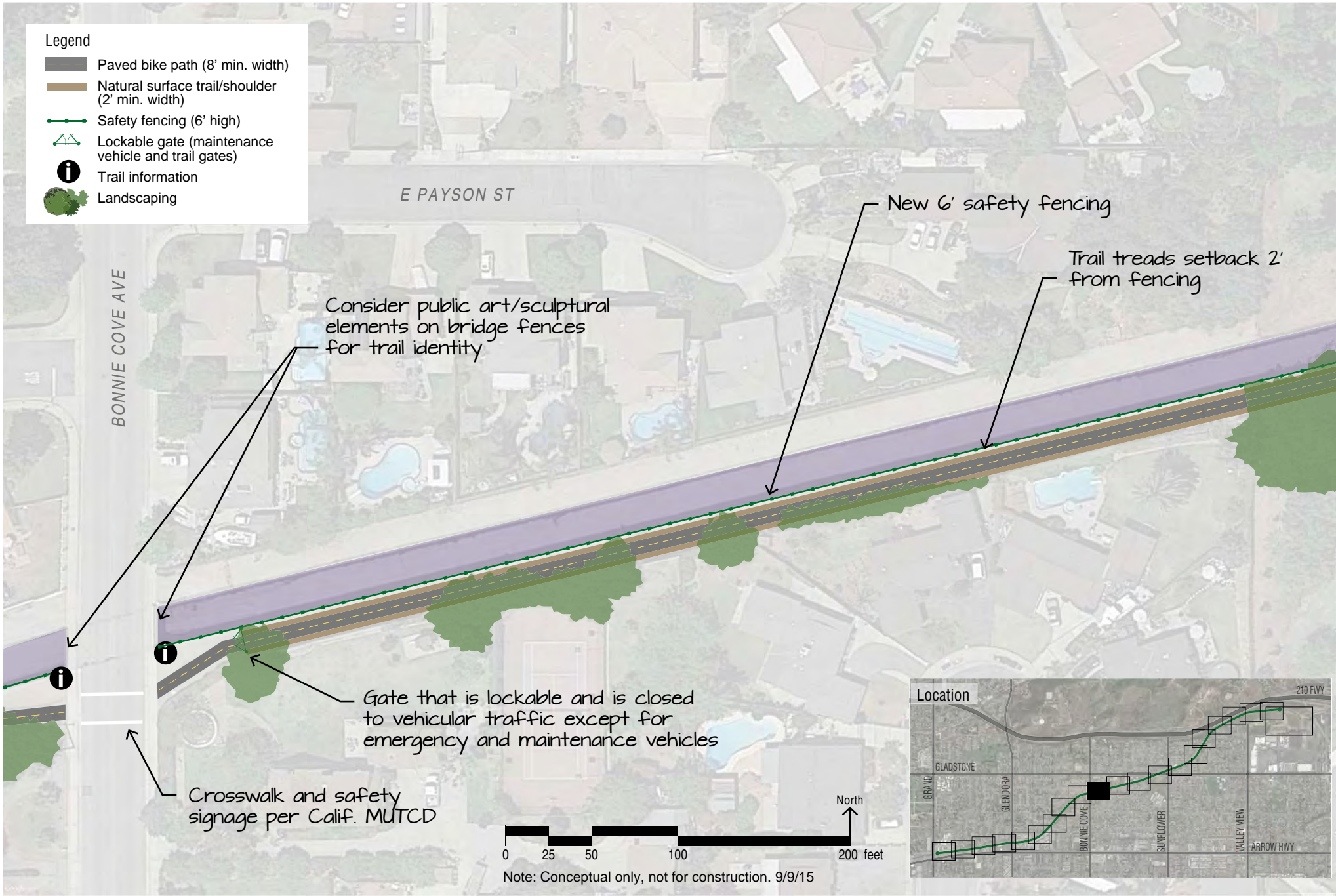
Note: Conceptual only, not for construction. 9/9/15



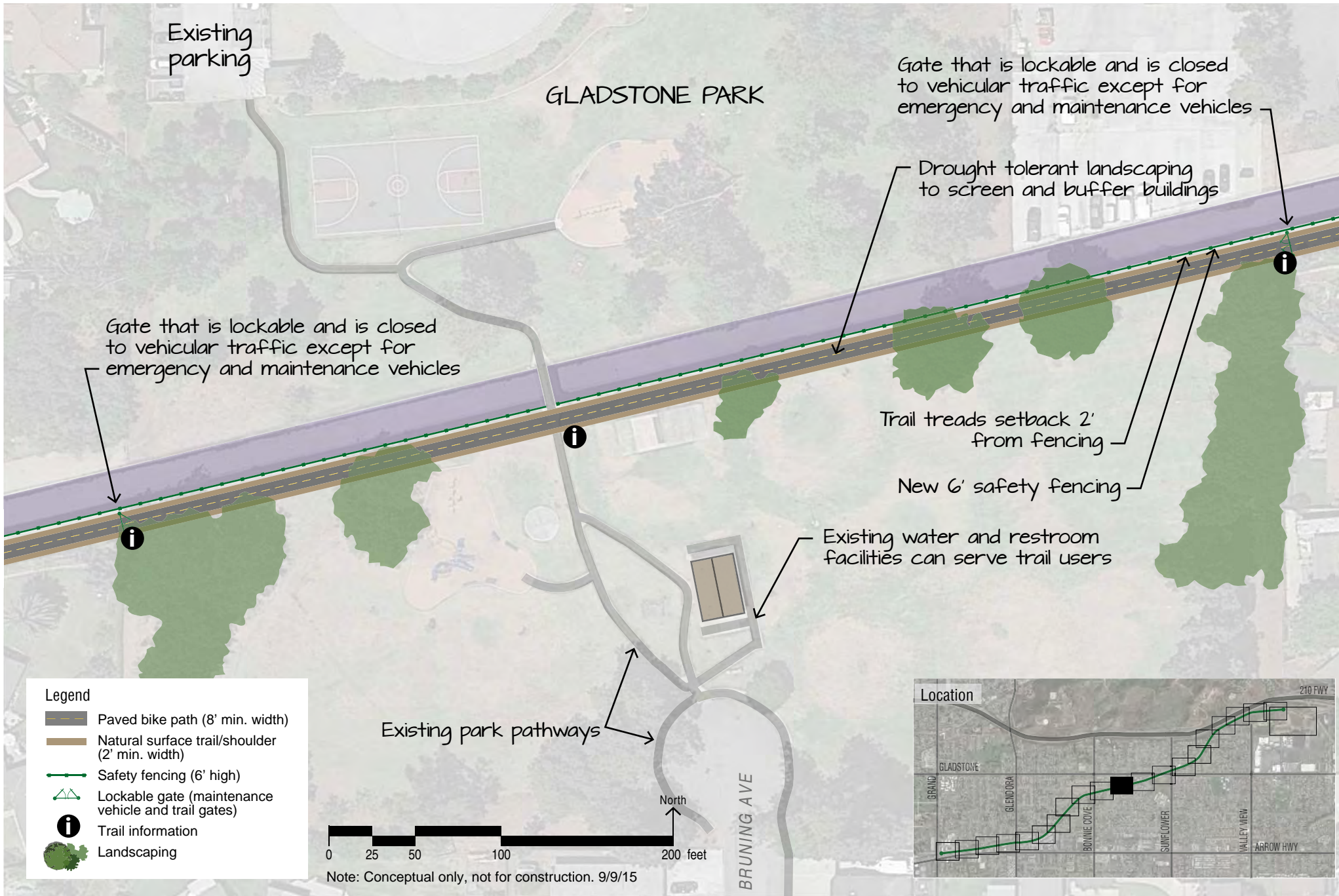
Juanita Ave to Bonnie Cove Ave (2 of 2)

Legend

-  Paved bike path (8' min. width)
-  Natural surface trail/shoulder (2' min. width)
-  Safety fencing (6' high)
-  Lockable gate (maintenance vehicle and trail gates)
-  Trail information
-  Landscaping









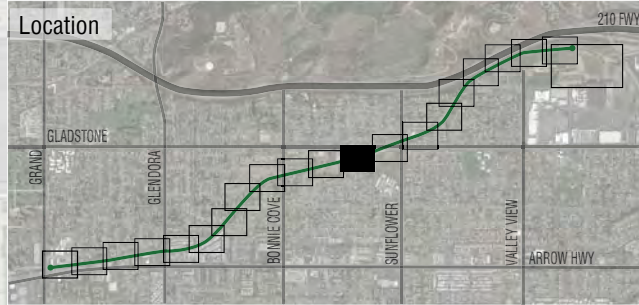
Bonnie Cove Ave to Sunflower Ave (1 of 4)



Bonnie Cove Ave to Sunflower Ave (2 of 4)

Legend

-  Paved bike path (8' min. width)
-  Natural surface trail/shoulder (2' min. width)
-  Safety fencing (6' high)
-  Lockable gate (maintenance vehicle and trail gates)
-  Trail information
-  Landscaping



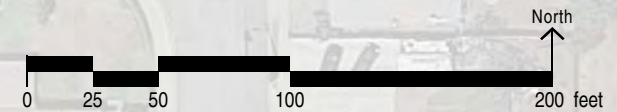
GLADSTONE AVE

Gate that is lockable and is closed to vehicular traffic except for emergency and maintenance vehicles

Gate that is lockable and is closed to vehicular traffic except for emergency and maintenance vehicles







Trail treads setback 2' from fencing

New 6' safety fencing



Note: Conceptual only, not for construction. 9/9/15

Legend

-  Paved bike path (8' min. width)
-  Natural surface trail/shoulder (2' min. width)
-  Safety fencing (6' high)
-  Lockable gate (maintenance vehicle and trail gates)
-  Trail information
-  Landscaping

Consider public art/sculptural elements on bridge fences for trail identity

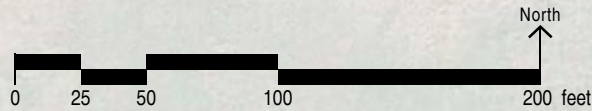
Remove fencing along streets and open as a pocket park for trail users with benches, using existing trees for shade

Coordinate with LA County Dept. of Public Works to assess feasibility of using a portion of this area as part of trail or pocket park during design phase

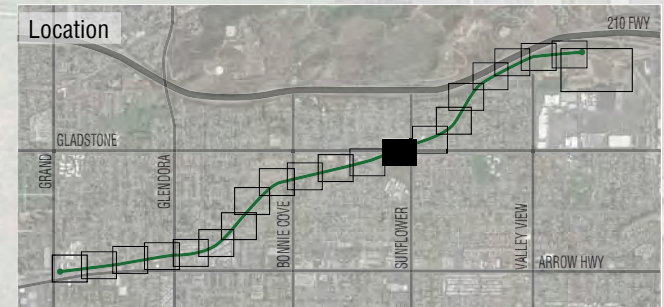
Trail route to follow streets and use existing signalized crossing

GLADSTONE AVE

SUNFLOWER AVE









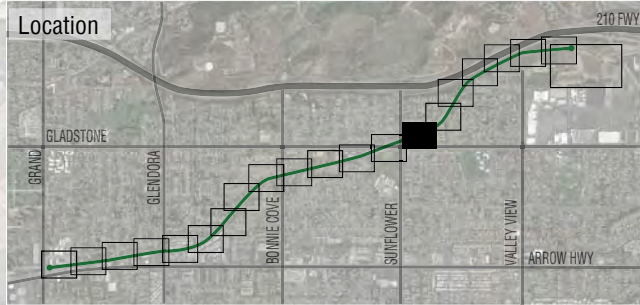
Note: Conceptual only, not for construction. 9/9/15



Bonnie Cove Ave to Sunflower Ave (4 of 4)

Legend

-  Paved bike path (8' min. width)
-  Natural surface trail/shoulder (2' min. width)
-  Safety fencing (6' high)
-  Lockable gate (maintenance vehicle and trail gates)
-  Trail information
-  Landscaping



SUNFLOWER AVE

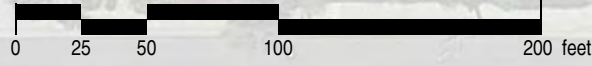
Consider public art/sculptural elements on bridge fences for trail identity

City-maintained area could be enhanced with drought tolerant shade trees

Gate that is lockable and is closed to vehicular traffic except for emergency and maintenance vehicles

Trail route along sidewalk to existing signalized intersection

GLADSTONE AVE









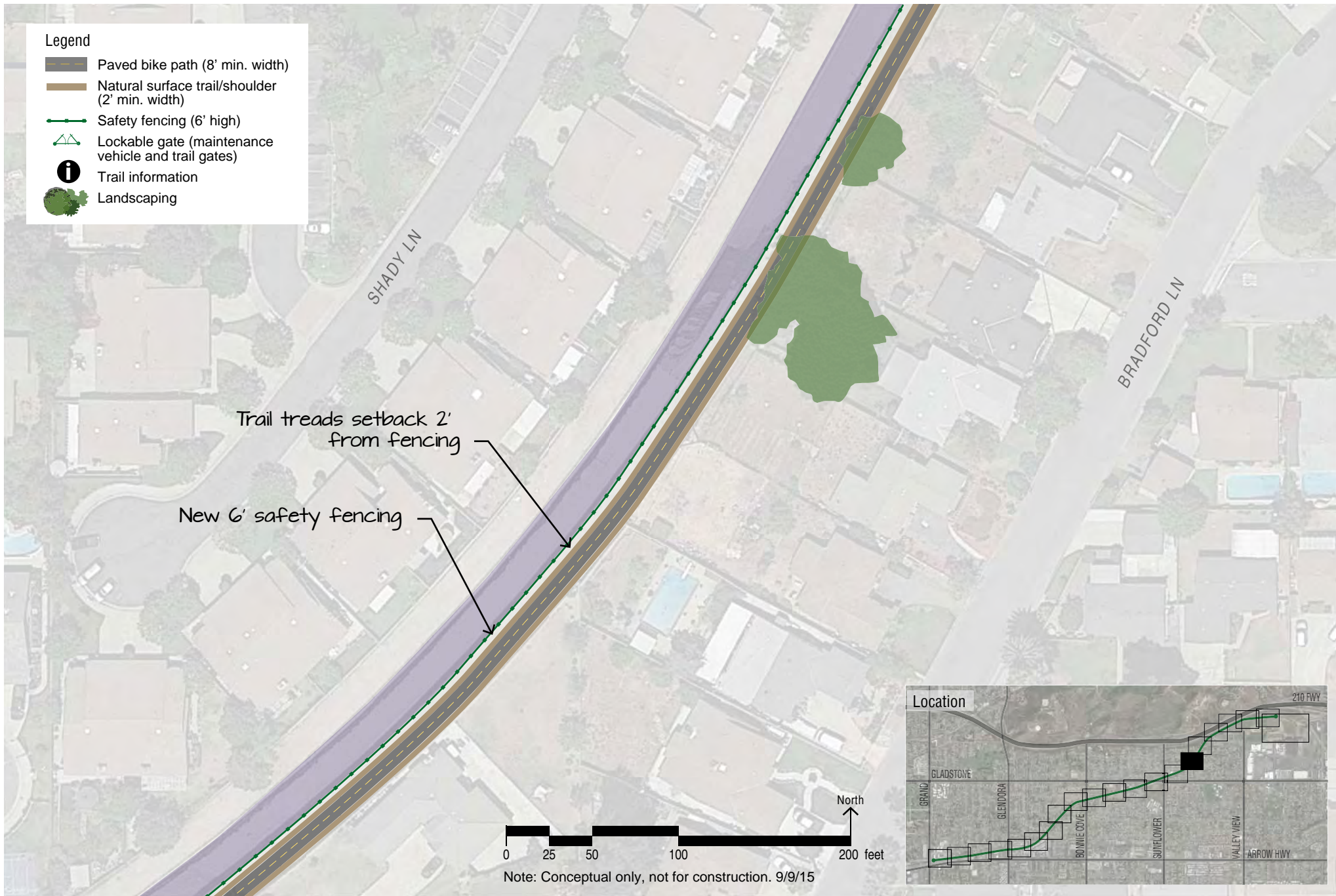
Note: Conceptual only, not for construction. 9/9/15

North

Sunflower Ave to Valley Center Ave (1 of 4)

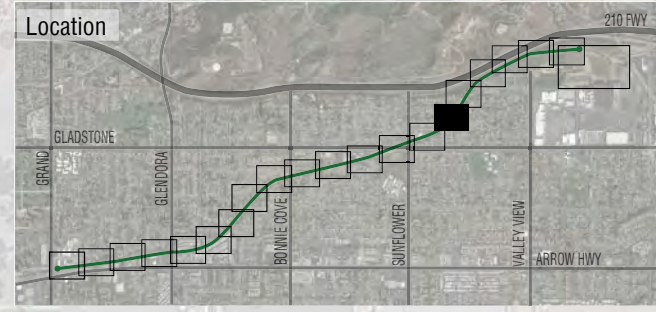
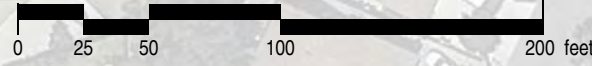
Legend

-  Paved bike path (8' min. width)
-  Natural surface trail/shoulder (2' min. width)
-  Safety fencing (6' high)
-  Lockable gate (maintenance vehicle and trail gates)
-  Trail information
-  Landscaping



Trail treads setback 2' from fencing







New 6' safety fencing



Note: Conceptual only, not for construction. 9/9/15

Sunflower Ave to Valley Center Ave (2 of 4)

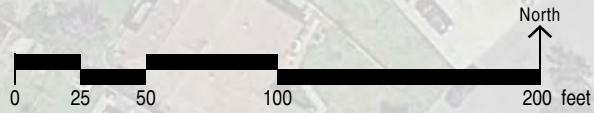
Legend

-  Paved bike path (8' min. width)
-  Natural surface trail/shoulder (2' min. width)
-  Safety fencing (6' high)
-  Lockable gate (maintenance vehicle and trail gates)
-  Trail information
-  Landscaping

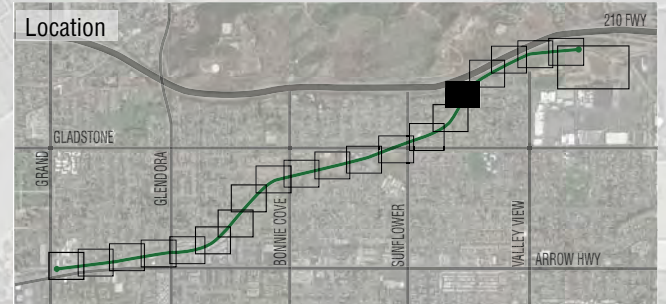
Trail treads setback 2' from fencing

New 6' safety fencing







E ALLEN AVE



Note: Conceptual only, not for construction. 9/9/15



Legend

-  Paved bike path (8' min. width)
-  Natural surface trail/shoulder (2' min. width)
-  Safety fencing (6' high)
-  Lockable gate (maintenance vehicle and trail gates)
-  Trail information
-  Landscaping

Gate that is lockable and is closed to vehicular traffic except for emergency and maintenance vehicles

Consult LA County Dept. of Public Works regarding feasibility of pocket park/trailhead

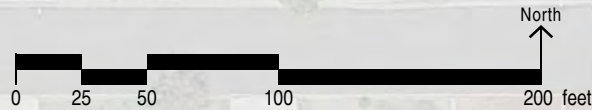
Existing gate - consider neighborhood trail access

E ALLEN AVE

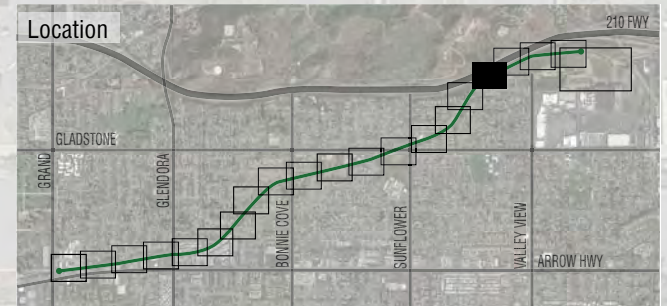
210 FWY

MORPATH LN







SWAIN ST

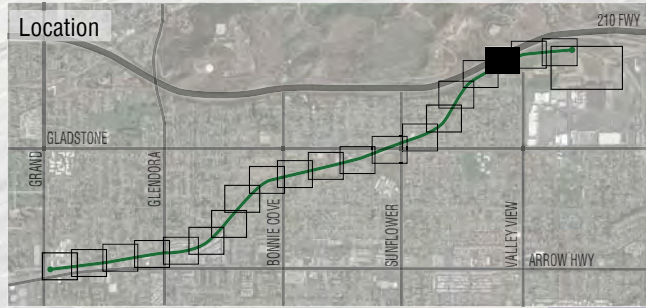


Note: Conceptual only, not for construction. 9/9/15



Legend

-  Paved bike path (8' min. width)
-  Natural surface trail/shoulder (2' min. width)
-  Safety fencing (6' high)
-  Lockable gate (maintenance vehicle and trail gates)
-  Trail information
-  Landscaping



In design phase consider par course or exercise stations around perimeter of park (either equipment or information/ technology-based, e.g. a brochure with exercises that can be done at designated trail stops, or a smart phone app).

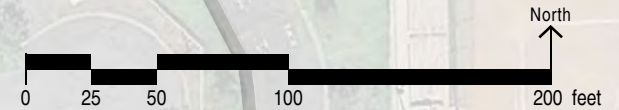
Trailhead and passive recreation pocket park - potential drought tolerant plant demonstration

LOUIE POMPEI MEMORIAL SPORTS PARK

Use existing walkways through parking area, improving areas as needed

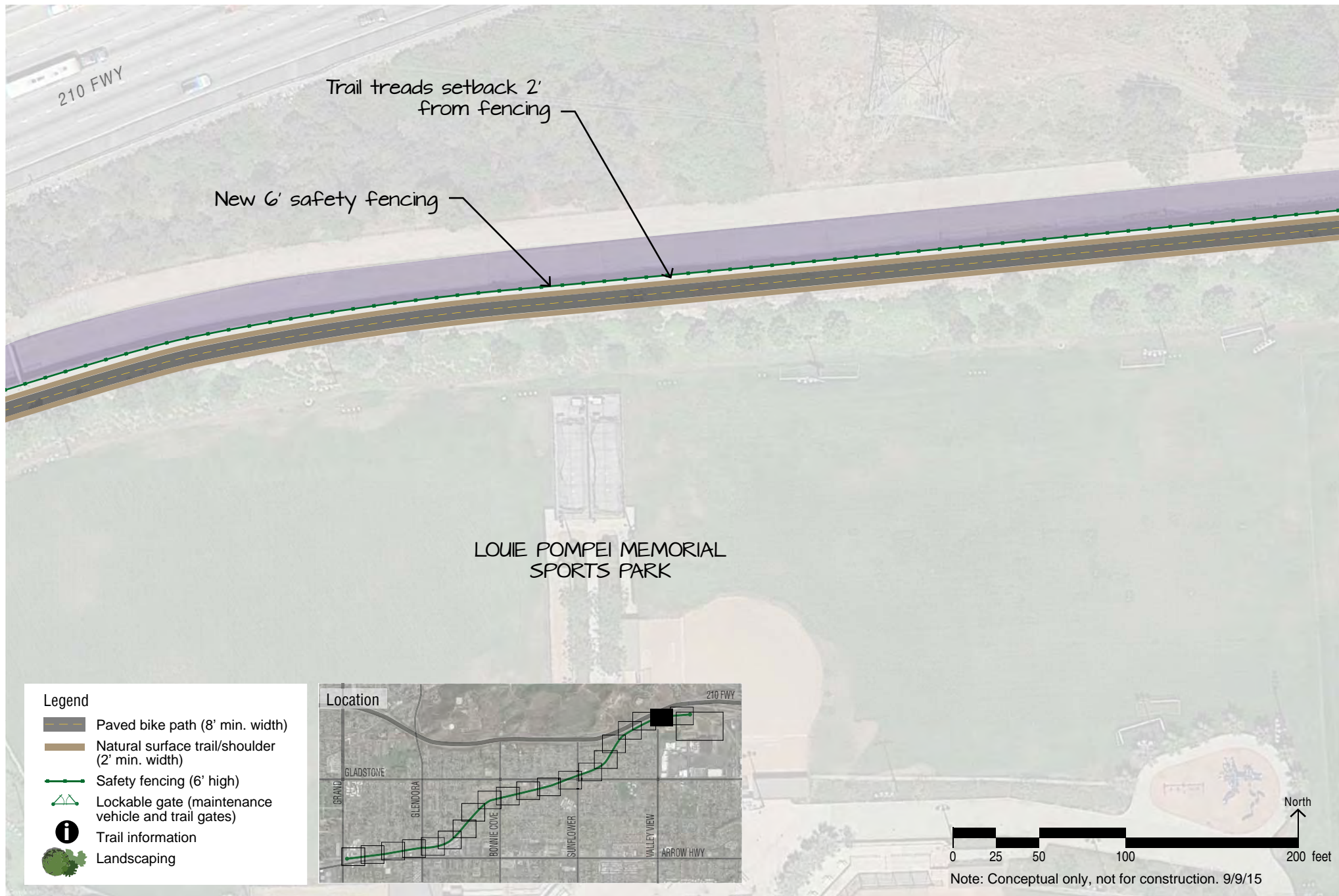
Route trail around perimeter of parking lot, adding 12' trail path

Gate that is lockable and is closed to vehicular traffic except for emergency and maintenance vehicles



Note: Conceptual only, not for construction. 9/9/15

E ALLEN AVE



Louie Pompei Memorial Sports Park (2 of 3)

Trail treads setback 2' from fencing

New 6' safety fencing

Gate that is lockable and is closed to vehicular traffic except for emergency and maintenance vehicles







LOUIE POMPEI MEMORIAL SPORTS PARK

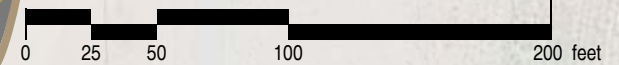
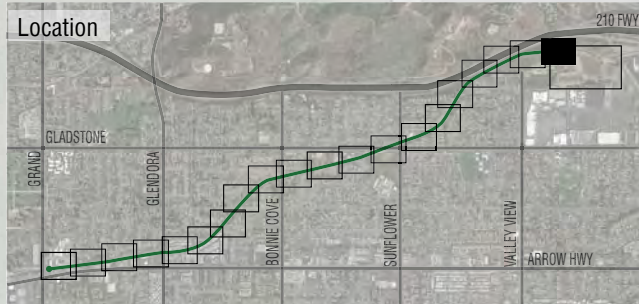
FORBES SPREADING GROUNDS

See separate sheet for spreading grounds area

Identify a safe connection to the park's existing pathway system during design phase







Legend

-  Paved bike path (8' min. width)
-  Natural surface trail/shoulder (2' min. width)
-  Safety fencing (6' high)
-  Lockable gate (maintenance vehicle and trail gates)
-  Trail information
-  Landscaping



Note: Conceptual only, not for construction. 9/9/15

Legend

-  Paved bike path (8' min. width)
-  Natural surface trail/shoulder (2' min. width)
-  Safety fencing (6' high)
-  Lockable gate (maintenance vehicle and trail gates)
-  Trail information
-  Landscaping

Trail connection outside of spreading basin area for when facility needs to be closed to public for safety or operational needs

Use existing paved area for bicycle/ trail use

Through design process, identify potential seating areas and interpretive/educational elements, including water resource themes. Also identify opportunities for planting drought tolerant vegetation for demonstration purposes

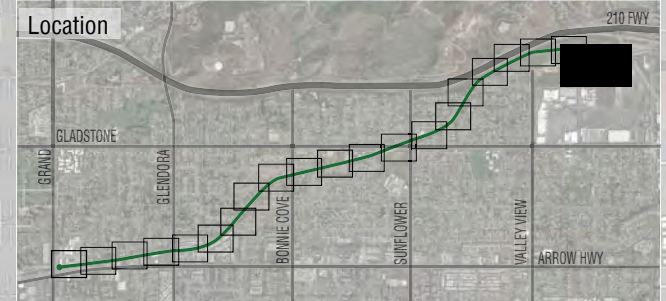
Spreading basins

Full fencing around perimeter

All vegetation shown is existing



Note: Conceptual only, not for construction. 9/9/15



Forbes Spreading Grounds

San Dimas Wash Trail Concept Plan
City of Glendora