

Homelessness Workshop

City Council

September 17, 2019

Item #1



CityOfGlendora.org

WELCOME



WELCOME

- Mayor
- City Manager



AGENDA

1. Welcome
2. Where are we now?
3. Legal Environment
4. Homeless Encampments
5. Housing
6. Homeless Resources
7. Staff Involvement
8. Community Involvement
9. Closing

WHERE ARE WE NOW?



WHERE ARE WE NOW?

- Homelessness Count
 - Every January
 - Assistance of City staff, volunteers, and LAHSA
 - Spa 3



WHERE ARE WE NOW?

- Homelessness Count

- 2017

- 220 (202 in cold weather shelter + 18 unsheltered)

- 2018

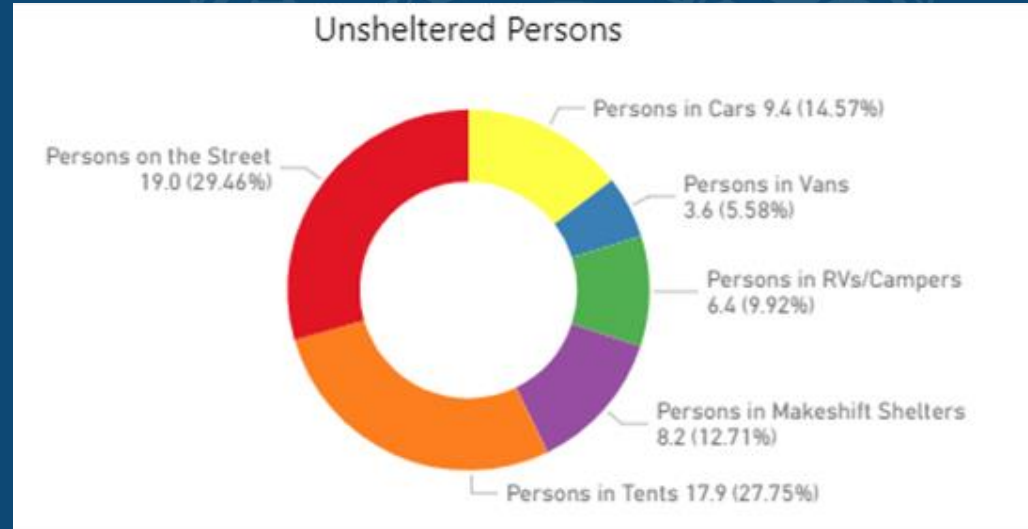
- 60 unsheltered

- 2019

- 65 unsheltered

WHERE ARE WE NOW?

- Homelessness Count - 2019
 - Estimates based on regional statistics
 - We need better data to make more informed decisions



WHERE ARE WE NOW?

- **Homelessness Strategic Plan**
 - **Adopted by City Council on June 2018**
 - **Shelter Emergency Adopted by City Council on May 17, 2018**

WHERE ARE WE NOW?

- **Goal 1**: Improve Community Engagement and Coordination Between Key Stakeholders, Including the Regional Coordinated Entry System
- **Goal 2**: Increase Income of Individuals and Families Experiencing or At-Risk of Homelessness
- **Goal 3**: Explore Opportunities to Increase Access to Affordable and Supportive Housing

WHERE ARE WE NOW?

- **Goal 1:**
 - Appoint a standing committee consisting of City staff and key community stakeholders to meet quarterly on homelessness, coordinate referrals, volunteers, and other services, and assist with implementation of the Homeless Plan – *in progress.*
 - Encourage City staff members or other appointees to participate in regional CES case-conferencing meetings in order to network and support housing goals – *in progress.*

WHERE ARE WE NOW?

- **Goal 1:**
 - Coordinate local outreach efforts, including MET and HALO teams and YWCA, and ensure that these are trauma-informed, non-duplicative, and lead to pathways to housing by conducting the VI-SPDAT, and assisting with documentation and income – *in progress*.
 - Engage with Glendora and Charter Oak Unified School Districts to identify families and youth experiencing homelessness or at-risk of homelessness and ensure they are connected to CES – *not started*.

WHERE ARE WE NOW?

- **Goal 1:**
 - Encourage City staff, homeless services providers, and general public to participate in the PIT Count – in progress and on going.
 - Develop a community engagement strategy to conduct regular outreach on Homeless Plan implementation – *in progress*.
 - Partner with regional CES lead to improve access to County prevention assistance through CES alignment and enhanced education to local service providers on program requirements – *in progress*.

WHERE ARE WE NOW?

- **Goal 1:**
 - Work with local non-profits, faith-based organizations, and SPA 3 CES lead, to provide CES access point at existing service locations (e.g. library, food pantry, churches). Consider combining with expanded services, including mobile showers, animal care, and small safe parking area – *in progress.*
 - Work with LA County to access California State AB109 funds for Homeless Outreach Services Teams (HOST) – *Completed. Funds are no longer available*

WHERE ARE WE NOW?

- Goal 2:
 - Ensure City departments and other partners are educated on County programs that provide SSI/SSDI/Veterans benefits advocacy and understand the referral process - in progress
 - Explore partnering with business community, faith-based organizations, school districts and colleges to offer job training and employment opportunities to households experiencing or at risk of homelessness – in progress

WHERE ARE WE NOW?

- **Goal 3:**
 - Explore funding sources for Rapid Re-housing program for individuals experiencing homelessness in Glendora and partnering with LA County to provide rent differential and case management services – *on-going*.
 - Work with the faith-based community to engage landlords, build a pool of potential rental units, and explore options for incentivizing landlords to work with homeless families and individuals – consider partnering with neighboring cities to develop this – *in progress*.

WHERE ARE WE NOW?

- **Goal 3:**
 - Explore ways to incentivize renting Accessory Dwelling Units to low-income households or homeless individuals - *not started*
 - Explore potential for creating permanent supportive housing or crisis housing at underutilized properties, in conjunction with County, Ministerial Association, and other regional partners – *in progress*

WHERE ARE WE NOW?

- Homelessness Strategic Plan
 - Total Plan: \$4.1 million over 18-months
 - Additional staff, overtime, contractual services

WHERE ARE WE NOW?

- **Measure H Grant Update**

1. **Homelessness Action Plan - \$30,000**

2. **Award \$305,000**

- **Cities of Glendora, San Dimas and La Verne**

3. **Cities of Award - \$343,250**

- **Cities of West Covina, Covina, Azusa, Duarte and Glendora**

WHERE ARE WE NOW?

- Awarded on May 31, 2019 - \$305,000 – 18 months
 - \$120,000 for Homelessness Liaison
 - \$70,200 for pilot motel voucher program
 - \$85,500 for Rapid Re-Housing pilot program
 - \$40,500 to manage the Rapid Re-Housing

WHERE ARE WE NOW?

- Awarded on January 24, 2019 - \$343,250 – 18 months
 - 1 full time Case Manager Supervisor
 - 4 full time Case Managers
 - Total Project Budget is \$643,530
 - Total cash match per city is \$33,000

WHERE ARE WE NOW?

- **Regional Funding**

- California State Senator Susan Rubio - \$5.625 million for SGV in State's Budget
- County BOS - \$6 million for COGs
 - September 2019 Motion (Kathryn Barger and Hilda Solis)
 - Innovative solutions
- San Gabriel Valley Regional Housing Trust (JPA)
 - SGVCOG Project
 - SB 751 (Rubio)

LEGAL ENVIRONMENT



LEGAL ENVIRONMENT

- City Attorney's Office
- District Attorney's Office



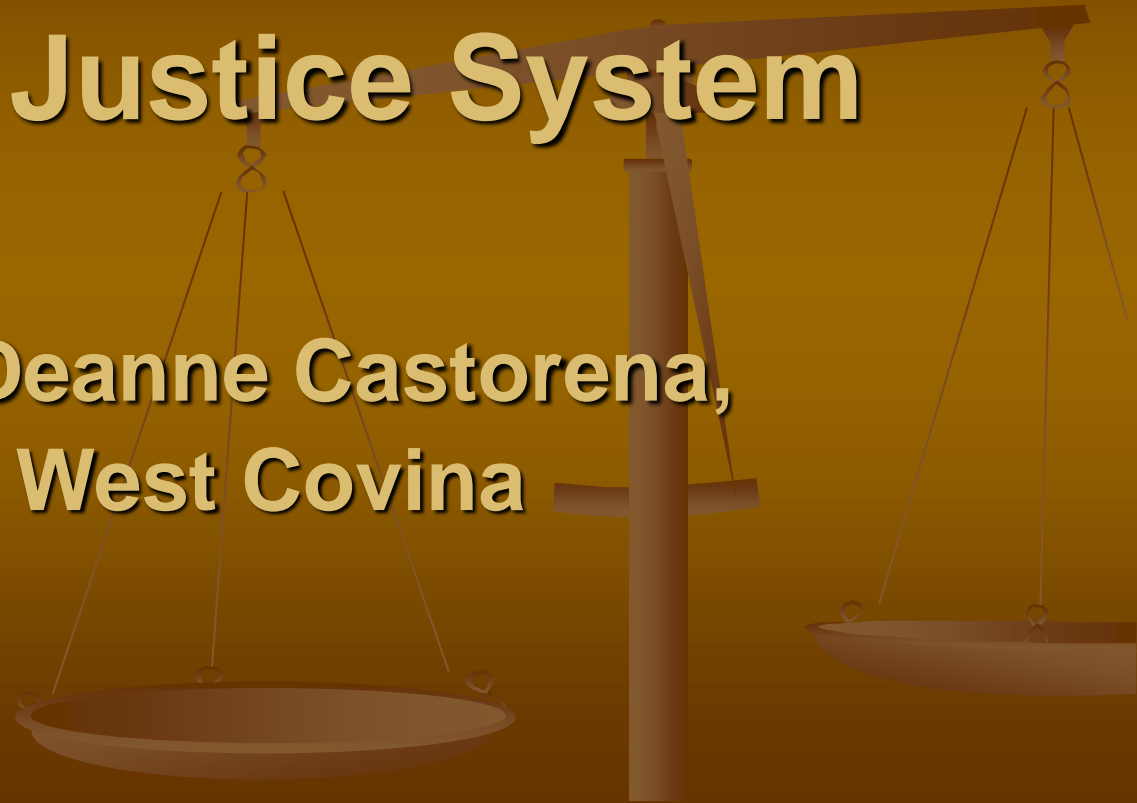
LEGAL ENVIRONMENT

- **City Attorney**
 - **Martin v. City of Boise**
 - **Orange County Catholic Worker v. Orange County**
 - **Carl Mitchell v. City of Los Angeles**
 - **Human Right Orange County, et al. v. County of Orange [San Clemente]**

The District Attorney's Office and the Criminal Justice System



By Deanne Castorena,
DIC West Covina



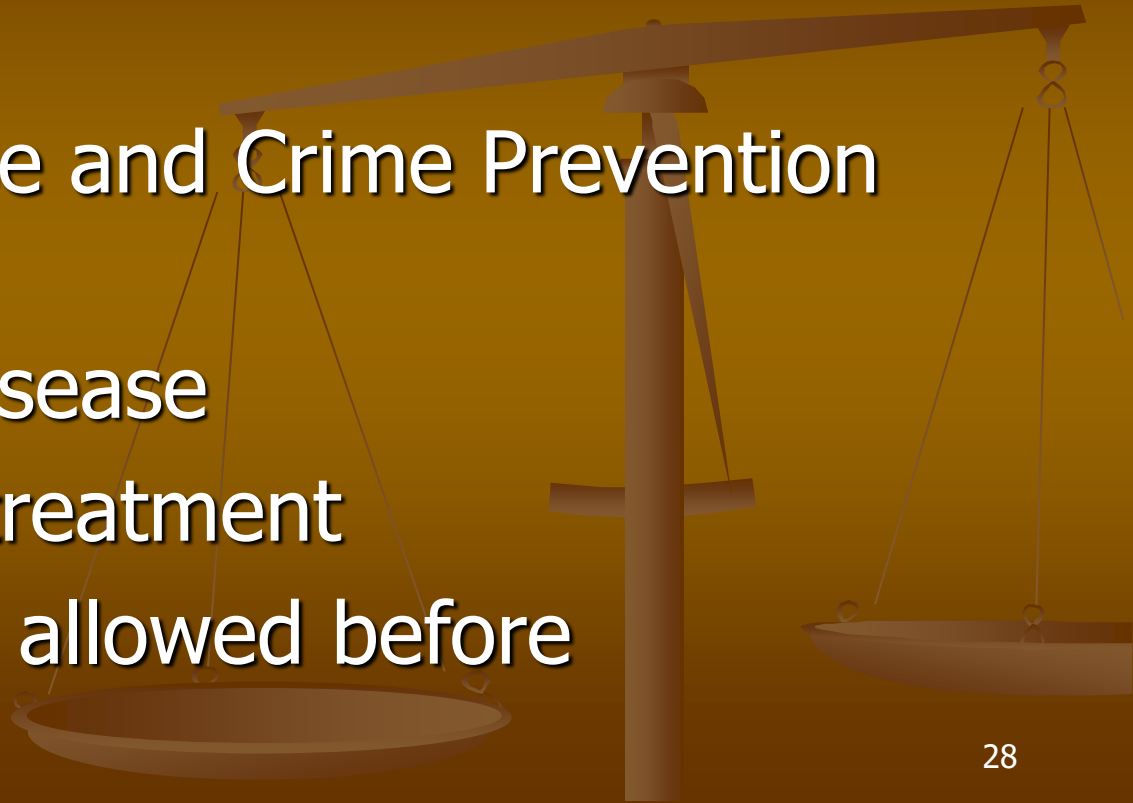
DE-INCARCERATION

- 36
- 109
- 47
- 57
- 64
- 10
- 1810



PROP 36

- 2000
- Substance Abuse and Crime Prevention Act
- Addiction is a disease
- Probation with treatment
- Multiple failures allowed before incarceration



AB 109



- 2011
- Public Safety Realignment Program
- Allows for “local prison” custody on many felonies
- Non-violent/serious, not PC 290 registration, not on list of excluded felonies
- Reduces prison overcrowding

PROP 47



- 2015
- Safe Neighborhoods and Schools
- Reduces many felonies to misdemeanors
 - Drug possession
 - Theft - Increased threshold to \$950
 - Includes RSP, GTA, fraud, etc.
 - Shoplifting – PC 459.5
- Supposed to increase addiction treatment

PROP 57



- 2016
- Criminal Sentences and Juvenile Court Proceedings
- Gives discretion to CDCR to eliminate additional sentence for enhancements (guns, gangs, amount of drugs, amount of embezzlement, etc)
- Juvie Court judges decide where to prosecute minors/not prosecutors

PROP 64

- 2016
- Marijuana Legalization
- Legalizes marijuana for adults/21
- Under state Penal Code, not federal
- Allows county/cities to establish regulations for legal sales

SB 10

- 2019
- Money Bail Reform Act
- Eliminates cash bail
- Pre trial risk assessment
- Rich and poor treated alike



AB 1810

MENTAL HEALTH DIVERSION

- PC 1001.35 (2018)
 - No conviction
 - Recent diagnosis by expert
 - Mental disorder played a significant role
 - 2 year treatment program



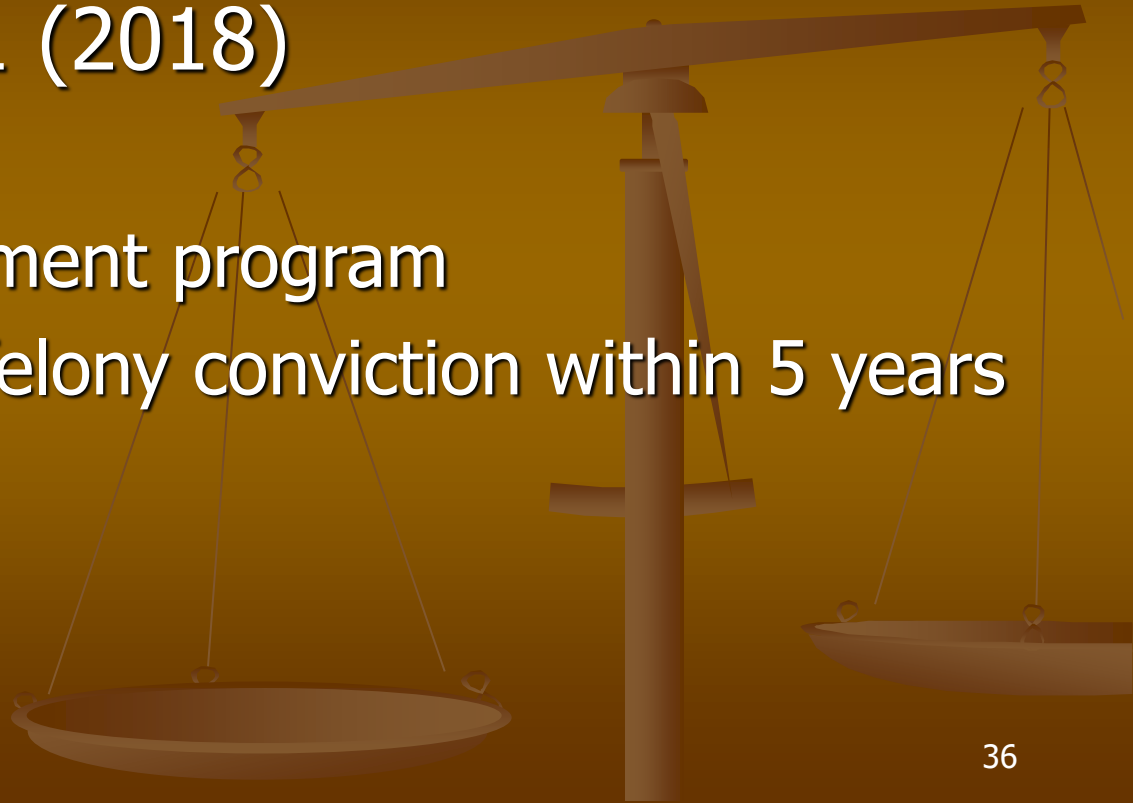
MILITARY DIVERSION

- PC 1001.80 (2015)
 - No conviction
 - Former or current military
 - Suffering from trauma as a result
 - 2 year treatment program



DRUG DIVERSION

- DEJ - PC 1000.1 (2018)
 - No conviction
 - 18 month treatment program
 - Applies unless felony conviction within 5 years



8TH AMENDMENT

- *Martin v. City of Boise* (9th Cir. 2018)
- Cruel/unusual punishment to criminalize “unavoidable consequences” of homeless status
- Cannot arrest suspect for sitting, lying or sleeping on sidewalks of other public grounds, unless there are bed spaces available to them

CUMULATIVE IMPACT

- Increase in property crime
- Increase in homeless on streets
- Increase in drug addiction
- Increase in illegal drug sales
- DECREASE IN PUBLIC SAFETY

THANK YOU

HOMELESS ENCAMPMENTS



HOMELESS ENCAMPMENTS

- **Current locations**
- **Clean-up vs. enforcement**
- **Clean-up procedures**
- **Clean-up costs**
- **Who to call**



HOMELESS ENCAMPMENTS

- **Current Locations**
 - **South Hills**
 - **Civic Center**
 - **Big Tree/Finkbiner**
 - **Park N Ride**
 - **Railroad**
 - **The Village**



HOMELESS ENCAMPMENTS

- **Clean-up vs. enforcement**
 - **Martin v. Boise**
 - **Health and safety vs enforcement of anti-camping provisions of the GMC**
 - **Brush clearance**
 - **Trash, human waste, other health issues**

HOMELESS ENCAMPMENTS

- **Clean-Up Procedure – Scott Hopkins, Public Works**
 - **Noticing**
 - **Information on services**
 - **Sorting of items left behind**
 - **Storage of items**
 - **Cost of clean-up**

HOMELESS ENCAMPMENTS

- **Noticing prior to clean up**
 - **7 days**
 - **1 day**
- **Information on services**
 - **Provided through handouts by staff**

HOMELESS ENCAMPMENTS

- **Sorting of items left behind**
 - **Items of value**
 - **PW keeps: Clothing, bicycles, items of non intrinsic value**
 - **PD keeps: Personal items like wallets jewelry**
- **Storage of items**
 - **90-days**

HOMELESS ENCAMPMENTS

- Resources Needed
 - Budget
 - Staffing
 - Training for existing staff
 - Long term contracts
 - Athens: special waste disposal and cleanup
 - Ocean Blue: hazardous waste cleanup

HOMELESS ENCAMPMENTS

- **Clean-up costs**
 - **\$10,000/day (not included in budget)**
 - **Ocean Blue: Hazardous waste certified company**
 - **Roll-off bins: (3)-40 yd bins, over 10 tons of waste**
 - **Staff time to operate heavy machinery, provide safety measures, and supervise clean-up**

HOMELESS ENCAMPMENTS



HOMELESS ENCAMPMENTS



ATTENTION PROPERTY OWNER

The found property has been taken by the City of Glendora Police Department. In order to claim your property, you must make an appointment with Property & Evidence (626)914-8289.

Date: August 20, 2019

This property must be claimed within 90 days of this notice or it will be disposed of per 2080.4 California Civil Code.

HOMELESS ENCAMPMENTS



HOMELESS ENCAMPMENTS



HOMELESS ENCAMPMENTS



HOUSING



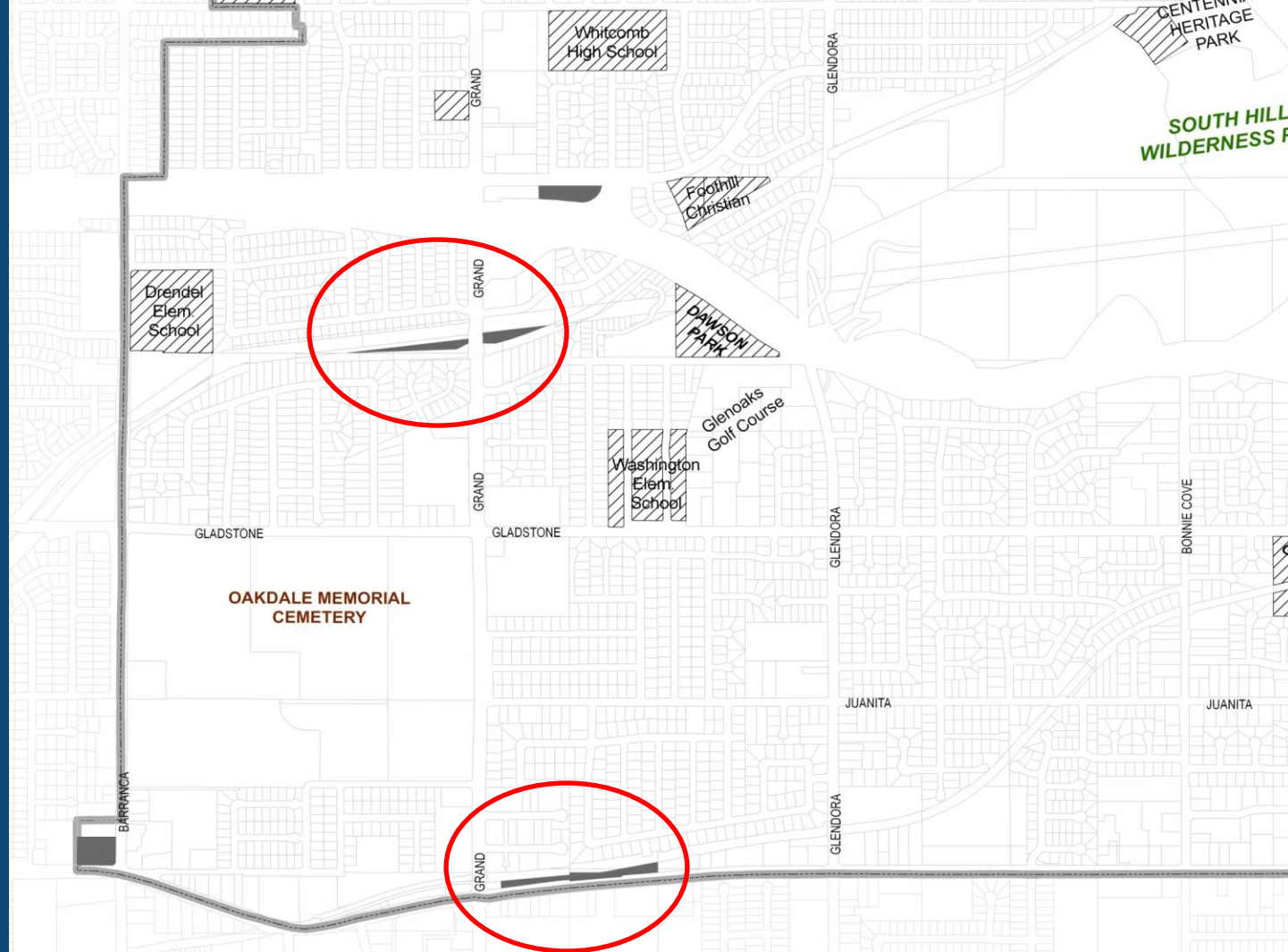
Inclusive Housing Regulations

- Emergency Shelters
- Transitional Housing
- Supportive Housing
- Single-room Occupancy (SRO)
- Licensed Care Facilities
- Accessory Dwelling Units



Emergency Shelters

- Housing with minimal support services for homeless persons.
- Occupancy of six months or less.
- Total number of beds for entire City = 20







Transitional Housing

- Housing Used to facilitate the movement of homeless individuals and families to permanent housing
- Occupancy up to two years.
- Permitted in multi-family residential zones

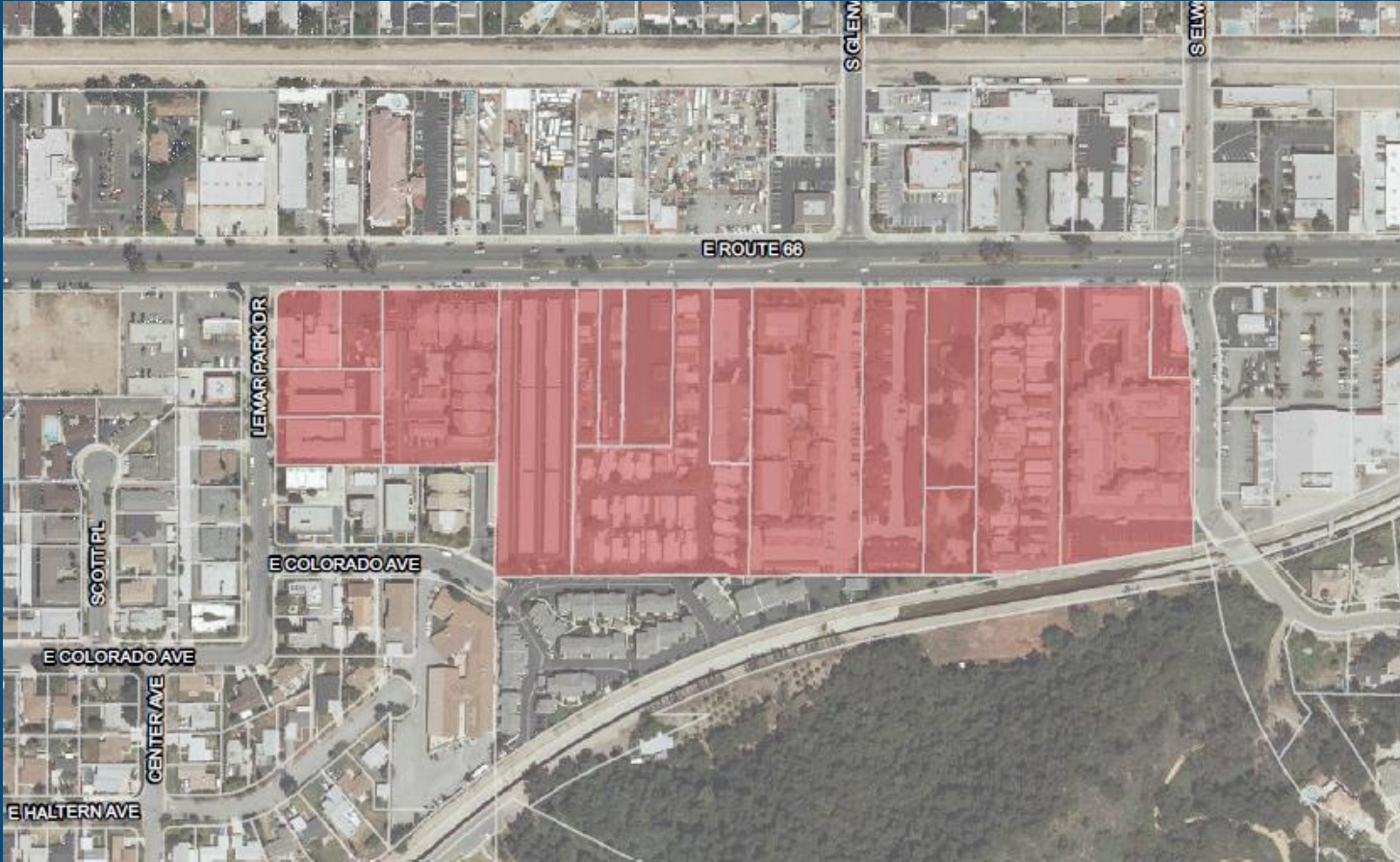
Supportive Housing

- Permanent rental housing linked to supportive services designed to enable former homeless to maintain stable housing
- Permitted in multi-family residential zones

“SRO” Housing – Single Room Occupancy

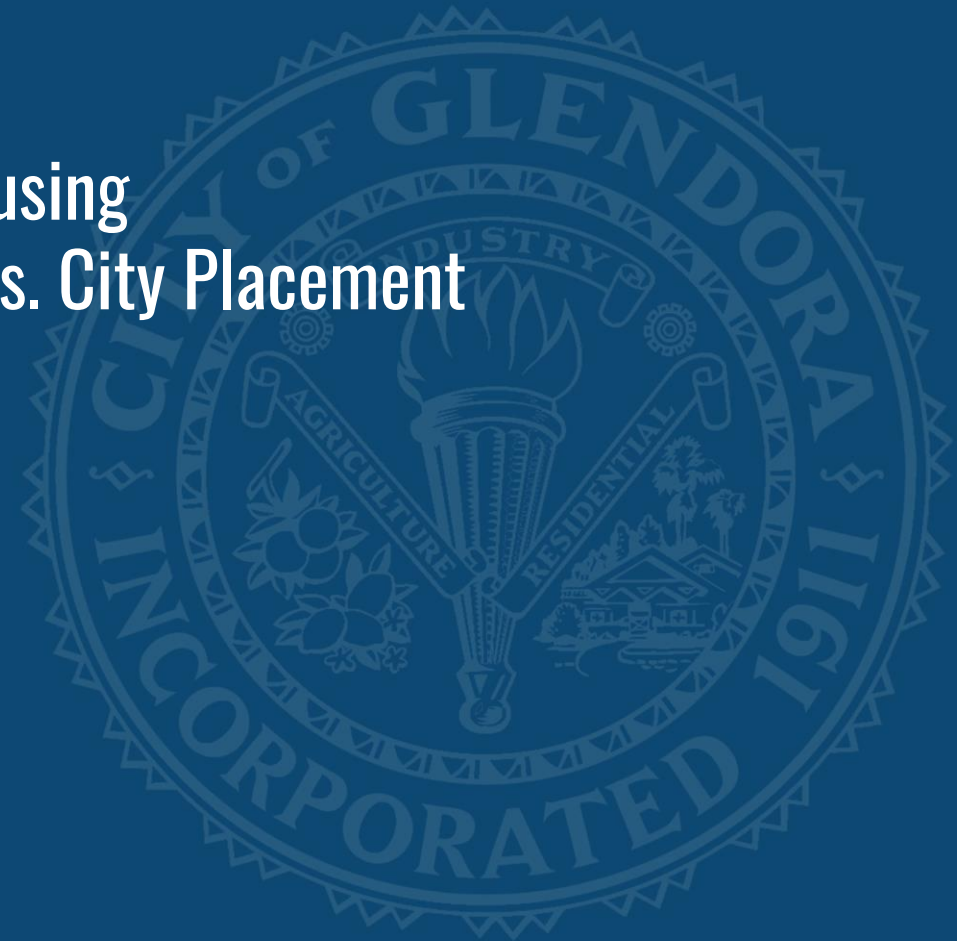
- One-room units intended for an individual.
- May have shared bathroom or kitchen facilities.
- May serve former homeless (supportive housing).
- Subject to same requirements as other residential development.
- Permitted in Route 66 – CRR subdistrict

Route 66 - CRR



MEASURE H FUNDING

- Measure H Funding for Housing
 - Regional Placement vs. City Placement

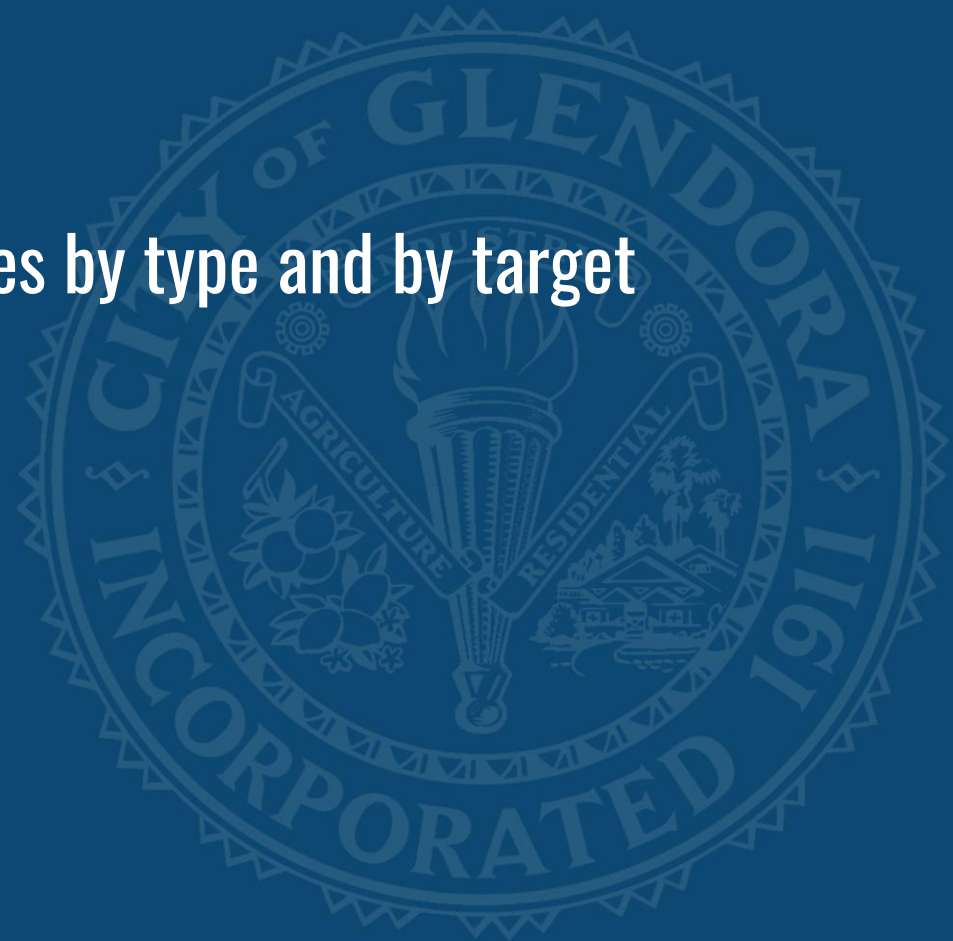


HOMELESS RESOURCES



HOMELESS RESOURCES

- **City Guide**
 - **List of available resources by type and by target population**



HOMELESS RESOURCES

- **Shepherd's Pantry**
 - **Craig Cerro**
- **Los Angeles Homeless Services Authority (LAHSA)**
 - **Elizabeth Heger, Sabrina De Santiago, Daniella Alcedo**
- **Union Station Homeless Services**
 - **Maria Lopez, Debbie Mota, Shawn Morrissey**
- **LA County Homeless Initiative**
 - **Leticia Colchado**

STAFF INVOLVEMENT



CITY STAFF INVOLVEMENT

- **Community Services**
 - **SGVCOG**
 - **Measure H Grants**
 - **Community Partners**
 - **Community Centers**



CITY STAFF INVOLVEMENT

- **Community Services**
 - **Challenges**
 - **Staffing levels**
 - **Funding with strings attached**
 - **Changing requirements**
 - **Opportunities**
 - **Establish lasting partnerships**
 - **Better quality of life for all residents**

CITY STAFF INVOLVEMENT

- **Police**
 - **Intro and Overview of PD Content – L. Rosales, Police Chief**
 - **Day to Day Operations – M. Egan, Police Captain**
 - **Community Impact Team – R. Lombardi, Police Detective**
 - **Closing Comments – L. Rosales, Police Chief**

CITY STAFF INVOLVEMENT

- **Police**
 - **Day to Day Operations – M. Egan, Police Captain**
 - **Encampment procedures**
 - **Clean-up vs. enforcement**
 - **Programs**
 - **HALO**
 - **HOST**
 - **Challenges**
 - **Balance call activity with added homeless call activity**
 - **Calls for service**

CITY STAFF INVOLVEMENT

- **Police**

- **Community Impact Team – R. Lombardi, Police Detective**
 - Roles and responsibilities
- **Trespassing**
- **Challenges**

CITY STAFF INVOLVEMENT

- **Police**

- **Closing Comments – L. Rosales, Police Chief**

- **Challenges**

- **Limited allowable remedies**
 - **Community care**
 - **Fiscal/staffing**



- **Opportunities**

- **Education: e.g. website**
 - **Community Policing**



CITY STAFF INVOLVEMENT

- **Library – Janet Stone, Library Director**
 - **Free access to the world of ideas**
 - **Equitable, unabridged, welcoming**
 - **Standards based on safety and preventing impedance**

CITY STAFF INVOLVEMENT

- **Library**
 - **Facility**
 - **Shelter, power, restrooms, water, climate control, information access, intentional philosophy of dignity**
 - **Sanitation**
 - **Physical accessibility**
 - **Security**
 - **Behavioral expectations**

CITY STAFF INVOLVEMENT

- **Library**
 - **Staff interactions**
 - **Rapidly evolving population**
 - **Different dependence on resources**
 - **Heightened consequence of unmet needs**
 - **Hazards, impedance, and aesthetics**
 - **Direct impact; customer impact**

CITY STAFF INVOLVEMENT

- **Library**
 - **Challenges**
 - **Balance, change, visibility**
 - **Building architecture and sanitation**
 - **Access to critical areas**
 - **Clarity of general security environment**
 - **Environmental design & impact**
 - **Electricity, seating, lighting, etc.**

CITY STAFF INVOLVEMENT

- **Library**
 - **Challenges**
 - **Unfamiliarity**
 - **Aesthetics**
 - **Categorization**



CITY STAFF INVOLVEMENT

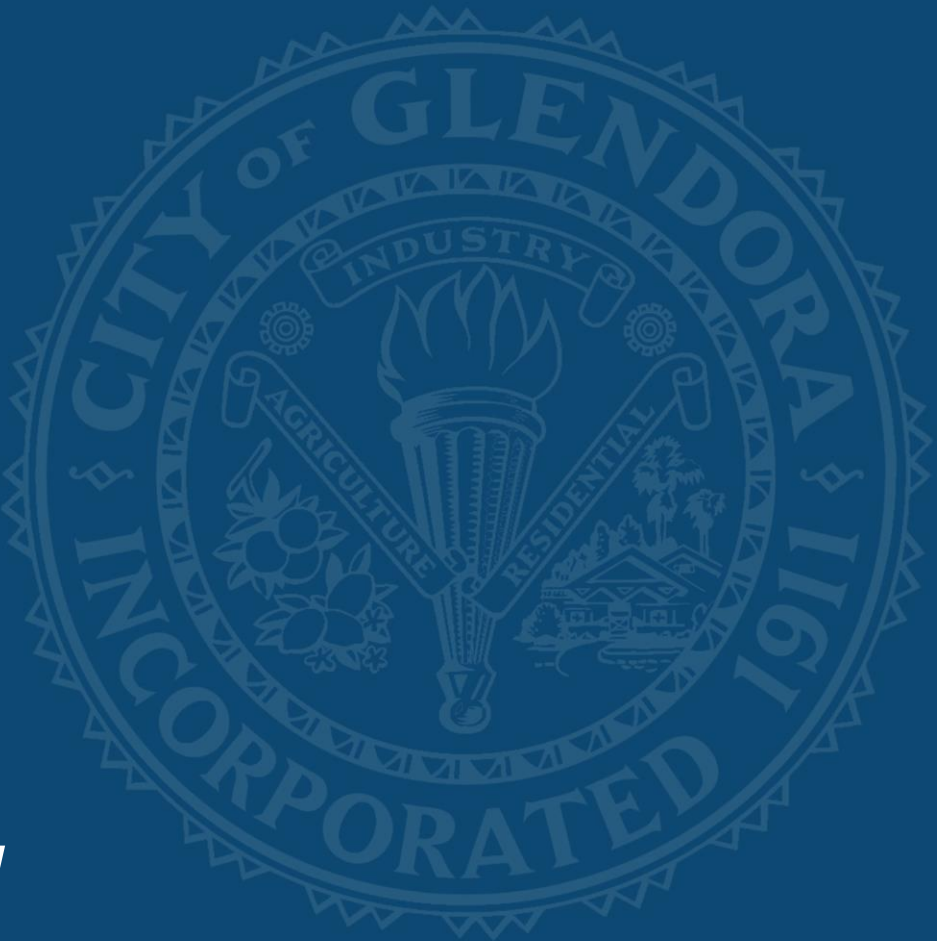
- **Library**
 - **Opportunities**
 - **Day space**
 - **Self-help resource center**
 - **Trained-staff referral or resource center**
 - **Long-time traditions**
 - **Equity, confidentiality, trust**
 - **Connection**

CITY STAFF INVOLVEMENT

- **City Manager's Office**
 - **Daily operations**
 - **Increasing e-mails**
 - **Increased calls**
 - **More daily interactions**
 - **Constant communication with partners**
 - **Research on solutions**

CITY STAFF INVOLVEMENT

- **City Manager's Office**
 - **Challenges**
 - **Social media**
 - **Emotional topic**
 - **Changing guidelines**
 - **Fiscal impacts**
 - **Opportunities**
 - **Education**
 - **Engaged Community**



COMMUNITY INVOLVEMENT



CITY STAFF INVOLVEMENT

- How can you get involved?
 - Volunteer
 - Donate
 - Make your voice heard
 - Homelessness@CityofGlendora.org
 - (626) 852-5200



COMMUNITY INVOLVEMENT

- Who/when should I call for questions/concerns?
 - Community Services Department
 - General homelessness questions
 - Services for homeless individuals
 - Get Involved
 - Homelessness@CityofGlendora.org
 - (626) 852-5200

COMMUNITY INVOLVEMENT

- Who/when should I call for questions/concerns?
 - Police Department
 - Emergencies
 - Call 9-1-1
 - Trespassing
 - (626) 914-8250



COMMUNITY INVOLVEMENT

- **Who/when should I call for questions/concerns?**
 - **Park and Ride**
 - **Public Safety and Enforcement Issues**
 - **Highway Patrol**
 - **(626) 338-1164**
 - **(323) 259-3200**
 - **Maintenance Issues**
 - **CalTrans**
 - **(213) 897-3656**

COMMUNITY INVOLVEMENT

- **Who/when should I call for questions/concerns?**
 - **Railroad**
 - **Public Safety and Enforcement Issues**
 - **LA County Sheriff Transportation Bureau**
 - **(323) 563-5000**
 - **Maintenance Issues**
 - **Metro**
 - **(888) 446-9721**
 - **Gold Line Construction Authority**
 - **(626) 471-9050**

COMMUNITY INVOLVEMENT

- **Animals**
 - **Inland Valley Human Society**
 - <https://www.ivhsspca.org/>
 - (909) 623-9777 (regular business hours)
 - (909) 594-9858 (after hours emergency)

NEXT STEPS



NEXT STEPS/MOVING FORWARD

- Assess feedback
- Communicate with Community
- Target solutions
- Funding options and service impacts
- Prioritize objectives *(examples)*
 - High Fire Hazard Zone Review
 - Shopping Cart Ordinance
 - Anti-Camping-9th Circuit Complaint Ordinance
 - Evaluate Housing Options
 - Environmental design strategies
 - City staffing levels
 - Health and safety concerns
 - Better understanding of homeless Population

NEXT STEPS/MOVING FORWARD

- Community partnerships
- Educated decisions
- No singular solution

For more information/questions please visit

www.CityofGlendora.org/homelessnessplan

Contact Staff:

Homelessness@CityofGlendora.org



THANK YOU

Glendora City Council Members can be reached at City_Council@cityofglendora.org